

MOBILE HARBOUR CRANE



MRX100

ROTATOR



Revision date: 2017-04-24

BROMMA

PRODUCT INFORMATION

MRX100 HIGHLIGHTS

- High lifting capacity with a low nominal tare weight
- Equipped with sliprings and motor for unlimited rotation

MRX100

The Bromma MRX100 rotator is ideal for use on mobile and jib cranes where the wire spacing is approximately 2 m. For this reason, the rotating device is usually fitted to spreaders equipped with gravity point adjustment and tower connection.

This type of spreader ensures that the container can be adjusted into the horizontal position. The rotating device can also be supplied with a hook (option) so that it can handle general cargo, and with the quick-change arrangement, it is easily connected/disconnected to the spreader.

Handling efficiency is dependent on the lifting height and the distance between the ropes. The MRX100 rotator can be connected to all kinds of jib cranes with rope distances between 1.2 to 2.3 m.

The MRX100 is equipped with sliprings and a motor for unlimited rotation with a desired speed of 4 r.p.m.

All electrics are well-protected and the hydraulic unit (which comprises the pump, motor, tank, valves and filter) is totally enclosed within the steel structure, ensuring maximum protection from damage.

The MRX100 is one of the market's most versatile and flexible rotators.

TECHNICAL FEATURES

MRX100 TECHNICAL FEATURES

STEEL STRUCTURE

HYDRAULIC SYSTEM

STEEL STRUCTURE

The MRX100 is fabricated of high quality European steel, giving it a high lift capacity of 100 metric tons and a low tare weight of 3.6 metric tons.



HYDRAULIC SYSTEM

The complete hydraulic unit consists of a tank, a pump, an electrical motor, valves and a filter, altogether shock mounted in a sturdy frame with protection covers.

The motor gives 4 kW at 50 Hz and the protection grade is IP 55.

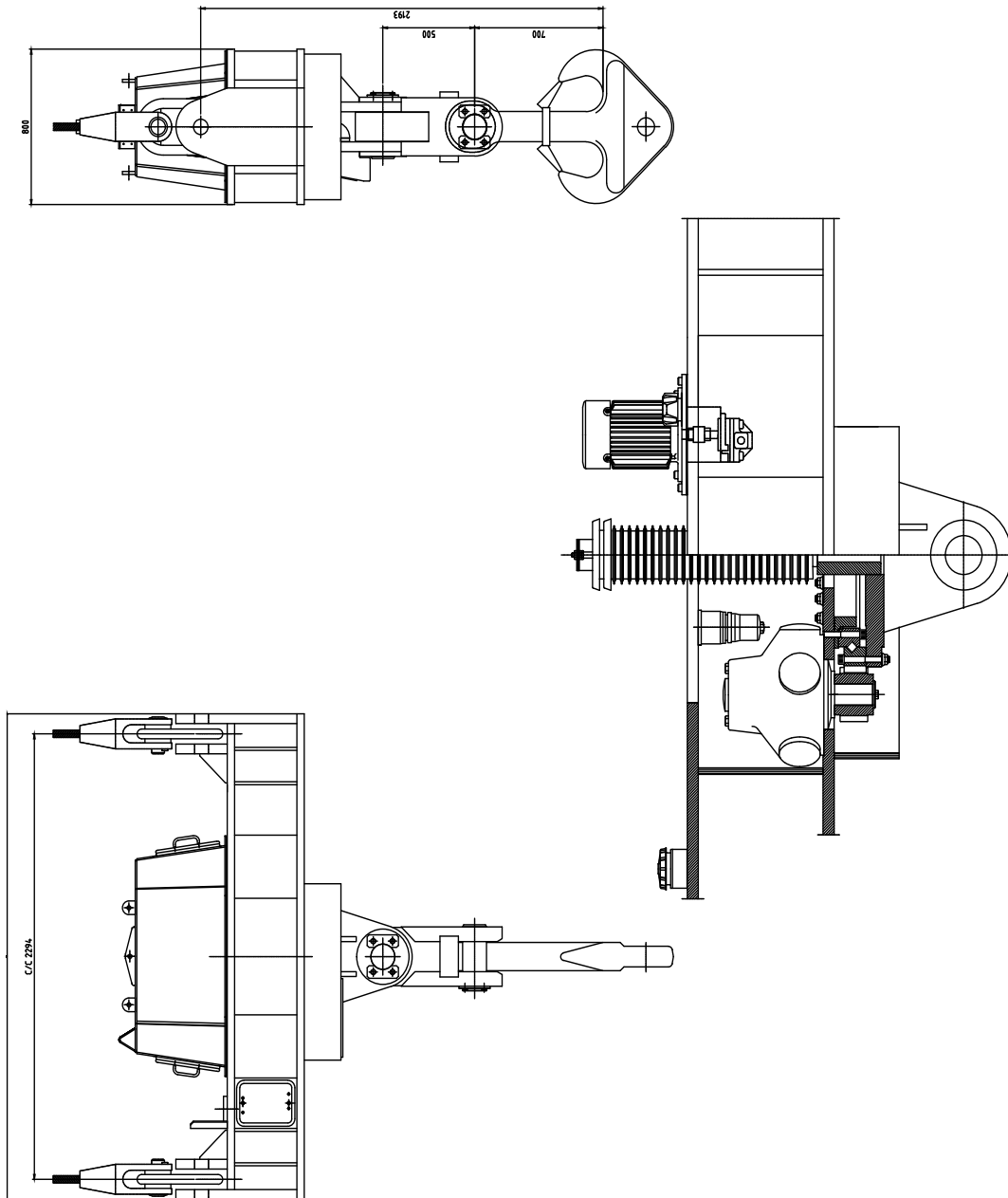
To achieve maximum durability, a robust piston pump is used. The pump has low noise level and is easy to service.

TECHNICAL DATA – MRX100

Lifting capacity	100 metric tons evenly loaded
Tare weight	Approximately 3.6 metric tons (without extra equipment)
Dimensions	See dimensional drawing
Rotation speed	Adjustable to the desired speed of 4 r.p.m.
Rotation	Unlimited (fitted with sliprings)
Hydraulics	System pressure 140 bar
Power supply	400/230 V AC 50 Hz or otherwise as agreed
Max power consumption	4 kW
Control voltage	230 V AC
Surface conditioning	Sand-blasted SA 2.5 EPZn(R) zinc epoxy primer 50-90 µm EP epoxy can be MIO pigmented 100 µm PUR polyurethane 70 µm Total: 220 µm
Manuals	Full service and repair manual supplied
Warranty	1 year

This specification is subject to alterations without prior notice.

DIMENSIONAL DRAWINGS – MRX100



*The above dimensional drawing of MRX100 is for illustration purpose and includes additional accessories such as the hook. We reserve the right to change the design and technical data without prior notice.
© 2017 Bromma – All rights reserved.*



We reserve the right to change the design and technical data without prior notice.
© 2017 Bromma – All rights reserved.

sales@bromma.com
www.bromma.com

A Tradition of Innovation

BROMMA