

The original
mechanical splicing systems.



Ferrules
Sleeves & Fittings

TALURITTM

Aluminium

for steel wire rope size 1-128 (5")

Straight ferrules

Ferrules for making turnback eye terminations using steel wire rope cater for a wide development of applications. All our ferrules are produced seamlessly for added safety.

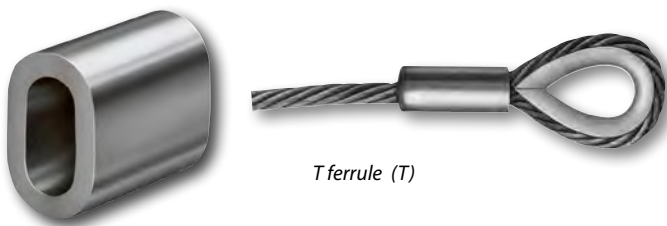


Our largest and smallest ferrule

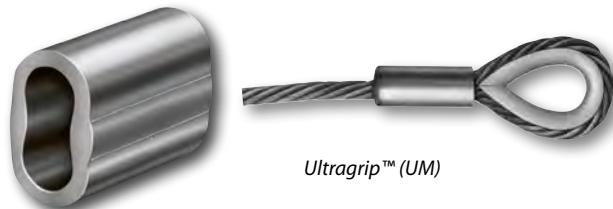
All aluminium ferrules from size 8 and upwards are fully traceable (ISO 9001) and marked with size, type and manufacturing batch number.

Our Ferrule Securing Instructions details the correct method of swaging, approximate pressure required and ferrule section criteria.

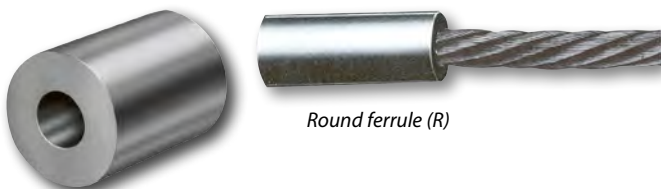
Many international institutes and authorities approve these ferrules. Details available on request.



T ferrule (T)

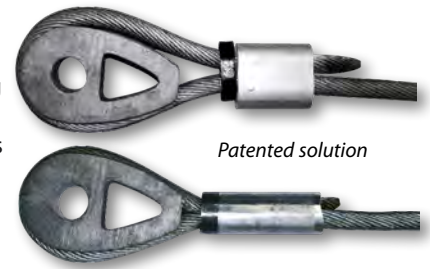


Ultragrip™ (UM)



Round ferrule (R)

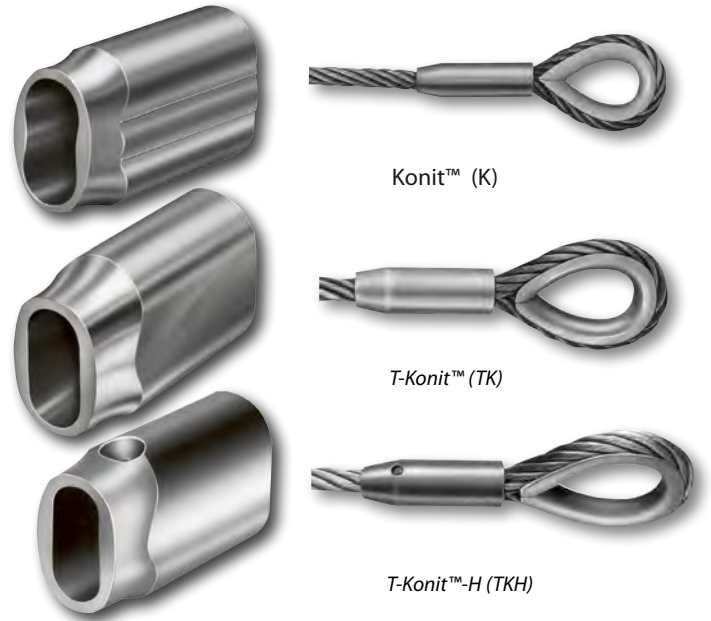
T-LOC is a reinforced aluminium termination. T-LOC prevents the splitting force of a high tensile wire rope of grade 2160. T-LOC is swaged together with the aluminium ferrule.



Patented solution

Conical ferrules

The conical ferrules are tapered at the back to reduce the risk of load snagging. Furthermore, the conical ferrules are elegant and functional.



Konit™ (K)

T-Konit™ (TK)

T-Konit™-H (TKH)

Our TKH has an inspection hole to ensure the short end of the wire rope is correctly positioned after pressing. The ferrule is swaged in a die with a spigot to ensure that the inspection hole remains open after pressing.



TALUKON is a conical ferrule for sling application. It has a very tight fit compared to other conical ferrules on the market. The wire rope termination will not get caught during lifting and will simply slide of an obstacle. This will minimise the risk of accidents.

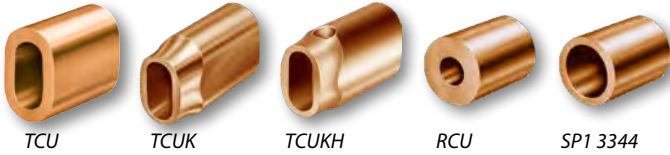


Patented solution

Copper

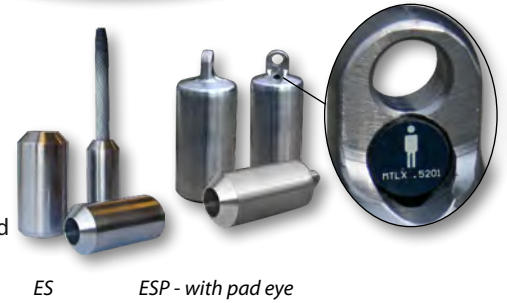
for stainless steel wire rope

Stainless steel wire rope requires the use of either copper or stainless steel ferrules. (Aluminium should not be used, due to galvanism wear.) All our copper ferrules are produced seamlessly for added safety.



End stops

End stops can be marked as per customer request. Designed for the present and future lifting gear industry, these are ideally suited for rotation resistant wire rope. ESP has inspection hole and is prepared for RFID chip.



Carbon steel

for bright and galvanized steel wire rope

Steel ferrules are used for applications where high temperatures and/or abrasion is a factor to be considered. Common examples, the steel melting industry, fishing industry and oil industry.

Ferrules



Sleeves

for Flemish eye swaging

These sleeves are used for manufacturing of Flemish eye terminations. We also deliver dies and die holders for Flemish eye swaging.



Stainless steel

for stainless steel wire rope or for bright and galvanized steel wire rope

These stainless steel ferrules are used in fields with high demand for resistance to corrosion and design, e.g. long term use in salt water, use in nuclear power plants, architecture etc.

Ferrules & fittings



Terminals



Swage sockets in a large range for different types of wire ropes, including rotation resistant ropes of grade 2160.

Developing new products

We pride ourselves on constantly developing new ferrules and fittings. We keep up with the pace with our customers demand and are always looking long term into the future improved development of our existing and new product lines.

We have a never-ceasing flow of new projects. New wire rope types and applications alone set out a number of demands. New fitting designs are requested and additional strength limits are needed.

Combining more than 60 years of practical experience with the latest technology our engineers can quickly provide the market with innovations.

Customer dialogue – our inspiration. Our ideas - the customers' tool.

Advisory service

Contact us whenever you are uncertain which ferrule to choose for a specific wire rope and we will guide you.

Test your application

We can perform different testing in our own pull test benches handling loads from 0,5 tons, 3-30 tons and 4-65 tons. Example of specimens are wire rope slings, chains/shackles, etc. We can offer proof test, hold test, tensile test and fatigue test (3-30 tons)

Training

No ferrule is better than its assembly!

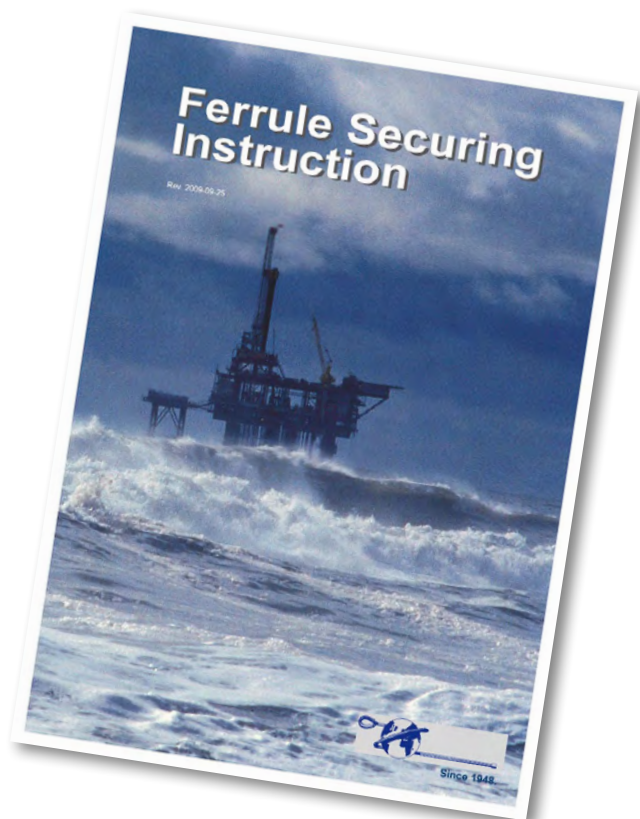
We offer training in swaging by following Ferrule Securing Instructions. This training is both theoretical and practical and teaches the operator how to select a ferrule for a specific wire rope, reading the tables and understanding applicable standards. Contact us for more information about training.

Inspection

We make on site inspections of terminations. The inspection can be either your own manufacturing of slings and terminations or assemblies used in your production such as lifting slings. Let us know your needs and we will offer a solution.



We are constantly developing new and innovative solutions.



Always swage according to Ferrule Securing Instruction!

**Talurit AB**

Amalia Jönssons gata 29
421 31 Västra Frölunda
SWEDEN

Phone: +46 31 709 30 80
Service: +46 31 709 30 93
Fax: +46 31 47 10 71
E-mail: info@talurit.se
Website: www.talurit.com

**Talurit (UK) Ltd**

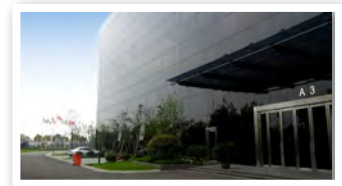
Unit 4 Shortwood Court
Shortwood Business Park
Hoyland Barnsley
South Yorkshire
ENGLAND S74 9LH

Phone: +44 1226 369960
Fax: +44 1226 361862
E-mail: sales@talurit.co.uk
Website: www.talurit.com

**Gerro GmbH**

Carl-Benz-Strasse 1
78244 Gottmadingen
GERMANY

Phone: +49 7731 97030
Fax: +49 7731 970317
E-mail: info@gerro.de
Website: www.gerro.com

**Talurit Machinery (Ningbo) Co., Ltd**

No. 982 Mingzhou Road, Beilun
Ningbo 315800, Zhejiang
CHINA

Phone: +86 (574) 86308590
Fax: +86 (574) 86308591
E-mail: vanilla.chen@talurit.cn
Website: www.talurit.cn



2013-04-05

Scan this QR Code with your smart device to visit our website.